

# 空氣淨化機 優惠計劃

高效淨化室內空氣  
提升空氣質數



2309 2398



[ultra@ultra-supreme.com](mailto:ultra@ultra-supreme.com)



Unit C, 15/F., Worldwide Centre,  
123 Tung Chau Street, Tai Kok Tsui

# Blueair空氣清新機 符合食環署指定規格

為減低新冠肺炎/病毒傳播風險，食環署已規定所有餐廳內的換氣量需要每小時至少6次才能營業，不少餐廳都選擇安裝合規格的空氣淨化設備，以解決換氣量不足問題。

Blueair空氣清新機內置UVC紫外光燈，以及高達99.97%HEPA過濾技術，阻隔及殺滅灰塵和病毒，受食環署認可，不但解決餐廳內換氣量不足問題，更提升餐廳內的空氣質素，保障員工及顧客的健康安全。

型號:

**Pro M**



型號:

**Pro L**





# BLUEAIR HEPASILENT 技術

BLUEAIR 智能自動監測空氣模組 (AIM)  
創造最頂級的空氣質素

## 高效專利過濾技術

專業空氣淨化讓健康更到位

	Pro M	Pro L
潔淨後出風量 *適用於2.4米	285cfm (485m <sup>3</sup> /h)	630 cfm (1070m <sup>3</sup> /h)
出風量 *適用於2.4米	70-330 cfm (119-561 m <sup>3</sup> /h)	140-660 cfm (238-1122m <sup>3</sup> /h)
風速	5段	5段
換氣量	6次	6次
噪音	32-55 dB(A)	32-55 dB(A)
耗電量	11-85 W	22-170 W
內置UVC紫外光燈 (波長253.7 nm)	✓	✓
HEPA過濾效能	>99.97%	>99.97%
粉塵過濾	✓	✓
煙霧過濾	✓	✓
過濾網數量	1	2
更換濾網提示	✓	✓
兼容	Air Intelligence Module	Air Intelligence Module
AHAM verified	✓	✓
Energy Star	✓	✓
ARB (0 Ozone)	✓	✓
產品尺寸	430x504x240 mm	790x504x240 mm
產品重量	11.5 kg	20 kg

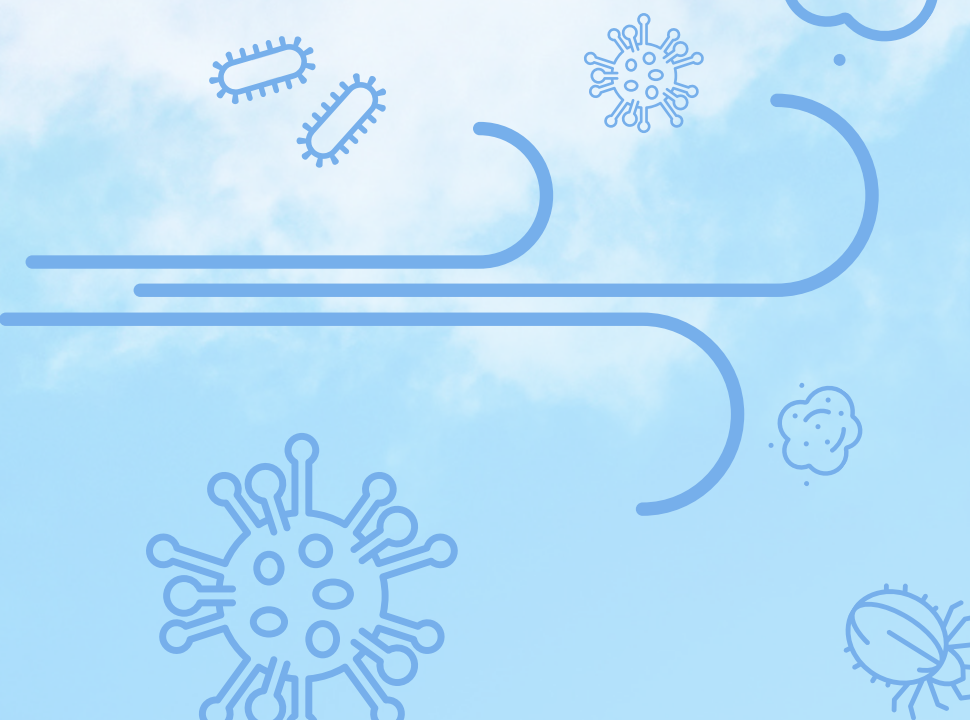
\*Air change per hour is calculated on the recommended room size, assuming 8 foot (2.4m) ceiling. The air change rate per hour will increase for smaller rooms.

\*Recommended interval for filter replacement is 6 months.

\*Blueair units comply with quality, safety and regulatory requirements of the countries where they are sold. Blueair units comply with international standards, including the CE mark, S mark, CB Scheme and ETL Listed Mark. National Standards are controlled by the distributors responsible for the market.

\*Filter Efficiency tests performed with filter media used in Pro models according to standard EN 1822-5:2009 (Determining the efficiency of filter elements). The testes measured the filtration efficiency of charged particles.

# 低密度濾網 防菌防黴



## 細菌無所遁形



## 攔阻微粒



## 營造健康環境

### BLUEAIR PRO濾網

基本濾網類別

低泡沫密度

進階濾網類別

熱感黏合聚丙烯纖維

過濾網數量  
(Pro M - L)

1 - 2

濾網架材料

PP

尺寸  
(H x W x D)

350 x 205 x (30+30) mm

基本濾網面積

0.14 m<sup>2</sup>

濾網面積  
(Pro M - L)

0.14 m<sup>2</sup> - 0.28 m<sup>2</sup>

進階濾網面積

1.60 m<sup>2</sup>

濾網面積  
(Pro M - L)

1.60 m<sup>2</sup> - 3.20 m<sup>2</sup>

濾網阻隔



PM 2.5



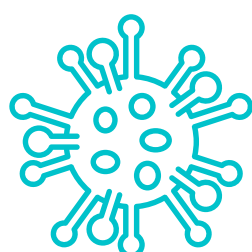
Pollen



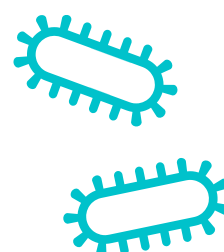
Dust



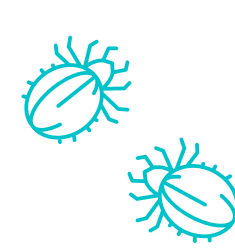
Pet Dander



Mold



Bacteria



Dust Mites